

Table 3.36. Effect of 5% decrease of ACN in the mobile phase on the detection parameters

| Parameters | Amlodipine | Glimepiride | Atrovastatin |
|--------------------|------------|-------------|--------------|
| Area | 637153 | 802193 | 657064 |
| RSD% | 0.25 | 0.11 | 0.02 |
| Theoretical plates | 8001 | 9359 | 9283 |
| Asymmetry | 1.26 | 1.14 | 1.12 |
| Resolution | N.A | 7.4 | 6.6 |

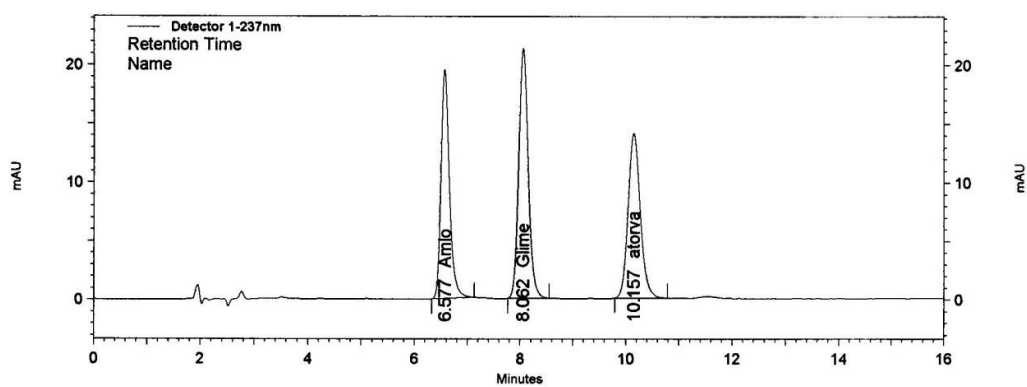


Figure 3.27. Chromatogram of amlodipine, glimepiride, and atorvastatin assayed in 5% increase of ACN.

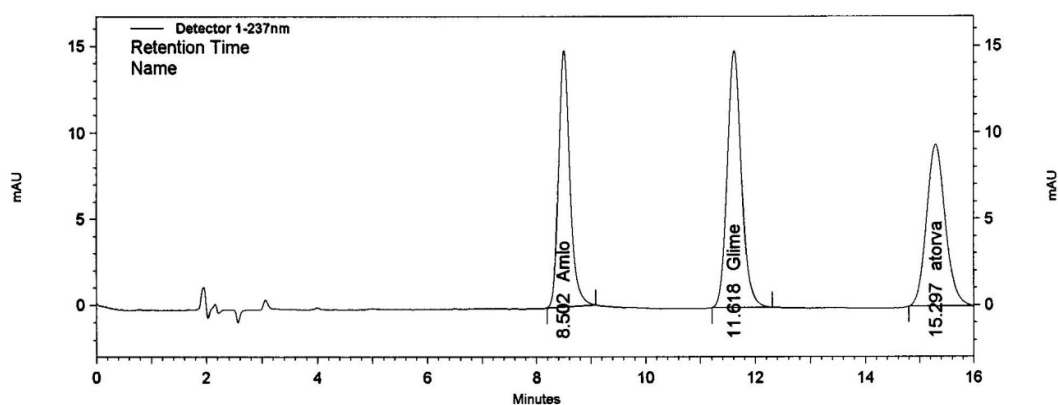


Figure 3.28. Chromatogram of amlodipine, glimepiride, and atorvastatin assayed in 5% decrease of ACN.